

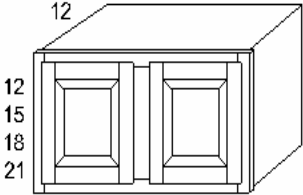
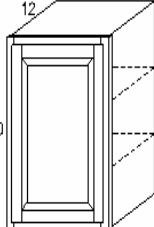
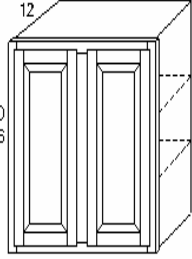
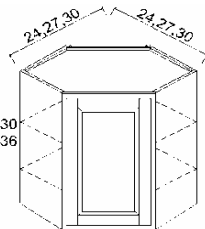
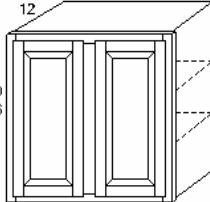
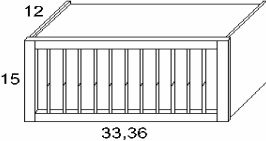
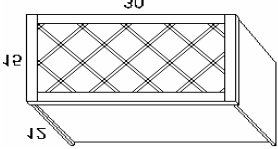

West Coast Granite & Kitchen Inc

1504 S Grand Ave, Santa Ana, CA 92705

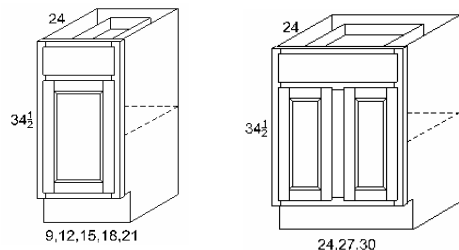
Tel: 714-838-8938, Cell 714-496-6813, Fax 714-838-8920

www.westcoastgk.com

WALL CABINETS - HAMPTON WHITE, SHAKER WHITE, CHESTNUT MAPLE

 <p>High Wall Cabinet 12" 15" 18", 2 door W3012 W3018 W3612 W3618 W3015 W3024 W3615 W3624</p>	 <p>High Wall Cabinet 30" 36", one OR two doors w/ 2 shelves W0930 W2730 W1536 W3336 W1230 W3030 W1836 W3636 W1530 W3330 W2136 W1830 W3630 W2436 W2130 W9036 W2736 W2430 W1236 W3036</p>	 <p>High Wall Cabinet 42", 2 doors w/ 3 shelves W0942 W2742 W1242 W3042 W1542 W3342 W1842 W3642 W2142 W2442</p>	 <p>High Wall Diagonal 30" 36" & 42" WDC2430 WDC2442 WDC2430G/D WDC2442G/D WDC2436 WDC2436G/D</p>	 <p>Refrigerator Wall Cabinet 24" Deep W361224 W361524 W361824</p>	 <p>Plate Rack WPR3015</p>	 <p>Wine Rack WWR3015</p>
 <p>Wall Microwave Cabinet WMC2730 WMC2736 WMC2742</p>	<p>Wall End Shelf WES0630 WES0942 WES0636 WES0642 WES0930-HW & SW WES0936 -HM & SH</p>	<p>Wall End Corner WEC1230 WEC1236 WEC1242</p>				

BASE CABINETS



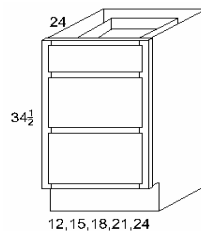
Base Cabinet

1 Drawer, 1 Door, 1 Shelf

B09 B21 B33
 B12 B24 B36
 B15 B27
 B18 B30

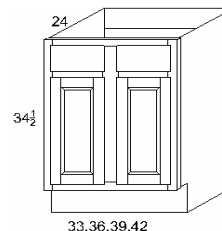
***Base cabinets start from 24" will b 2 doors

***B33 and B36 will be 2 doors & 2 drawers



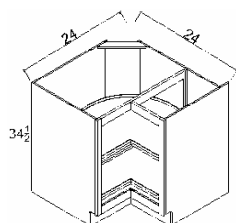
Drawer Bases-Three Drawer

DB12-3 DB24-3
 DB15-3 DB30-3
 DB18-3 DB36-3 - Special Order
 DB21-3



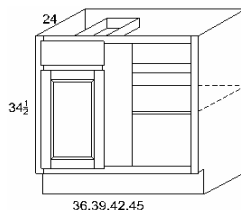
Sink and Range Bases

SB33
 SB36
 SB42
 DSB42



Base Lazy Susan

BLS33 BLS36



Base Blind Corner L/R

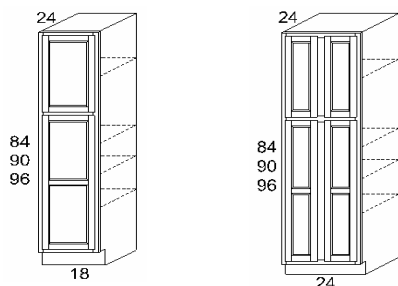
BBC42-45

Spice Rack SP09

Base Angel End Cabinet BEC24

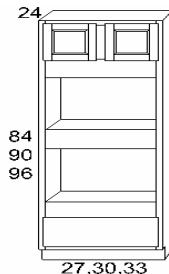
Base End Shelf BES12

HIGH CABINETS



Pantry Cabinet

PC1884 PC2484 PC3084
 PC1890 PC2490 PC3090
 PC1896 PC2496 PC3096



Oven Cabinet

OC3084 OC3184
 OC3090 OC3190
 OC3096 OC3196

Note: Skin Panel requires for Pantry/
Oven exposed side.

Accessories

CROWN MOLDING 1 5/8	CM2 1 5/8	TALL FILLER 3" x 96"	TF 3	WALL SKIN PANEL PNL12x30
CROWN MOLDING -ROPE 4 1/2	CMR 4 1/2	TALL FLUTE FILLER 3" x 96"	TFF3	WALL SKIN PANEL PNL12x36
ANGLE CROWN MOLDING 2 1/2	AMC 2 1/2	TOE KICK 8"	TK8	WALL SKIN PANEL PNL12x42
ANGLE CORWN MOLDING 3 1/2	AMC 3 1/2"	SCRIBE MOLDING 8"	SM8	
BASE FILLER 3"	BF3	OUTSIDE CORNER MOLDING	OCM8	
BASE FILLER 6"	BF6	LIGHT RAIL MOLDING 8"	LM8	
WALL FILLER	WF330	REFRIDGERATOR PANEL	PNL24x96x1/2	
WALL FILLER	WF336	DISHWASHER PANEL	DWPNL	
WALL FILLER	WF342	ISLAND SKIN PANEL	PNL34.5x96	
TALL FILLER 1.5" x 96"	TF 1.5	BASE SKIN PANEL	BSPNL24x34.5	

NOTE: Skin panel requires.

**Pantry and Oven Cabinets come in 24"D

**Contact us if you require any specifications that are not listed above.

